

KD20 Case Removal

1. KD20 disconnected and ready for case removal:



KD20 Case Removal

2. Open front access door. Remove HDDs and 2 Philips screws at red circles:

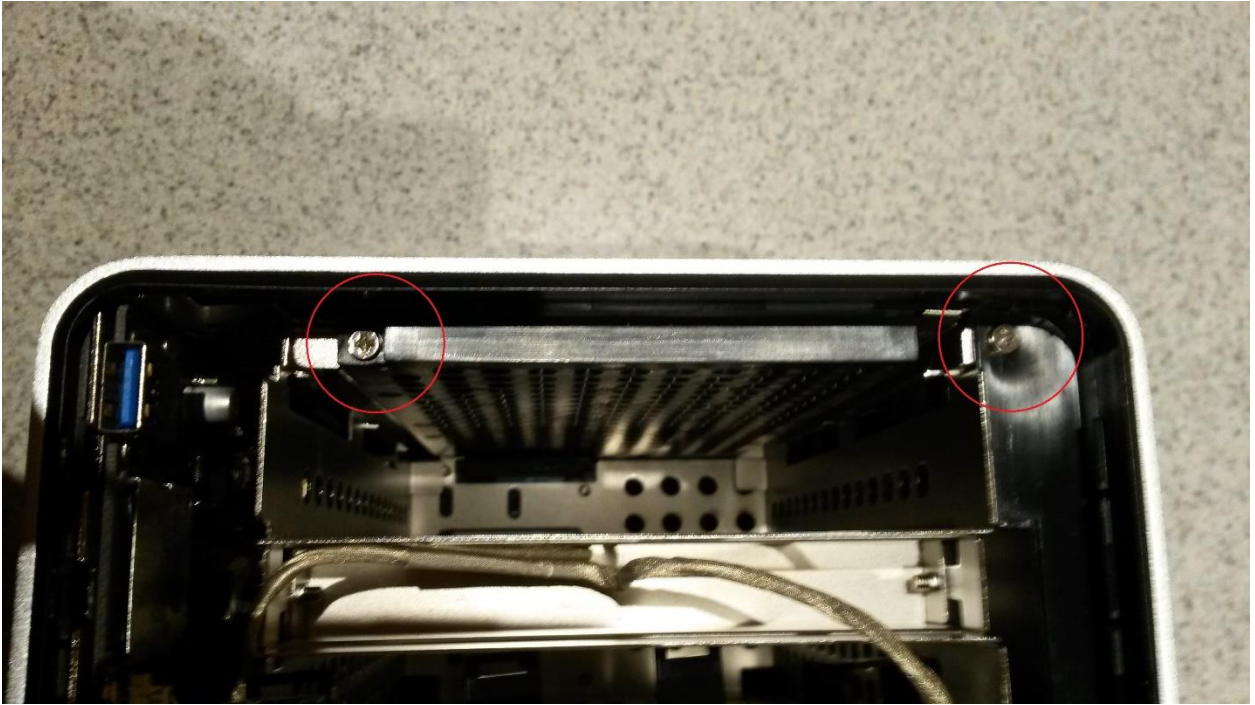


3. It takes a bit of fiddling, but the black front panel can be coaxed out:



KD20 Case Removal

4. Remove 2 Philips screws from the top front of the case:



KD20 Case Removal

5. Working from the front along the length of the case with a thin wide tool, pry the white plastic tabs down gently so as to allow the white panel to be released from the black plastic nubs holding the sidepanel to shell:



KD20 Case Removal

Repeat for the other edge to release the white side/rear panel.

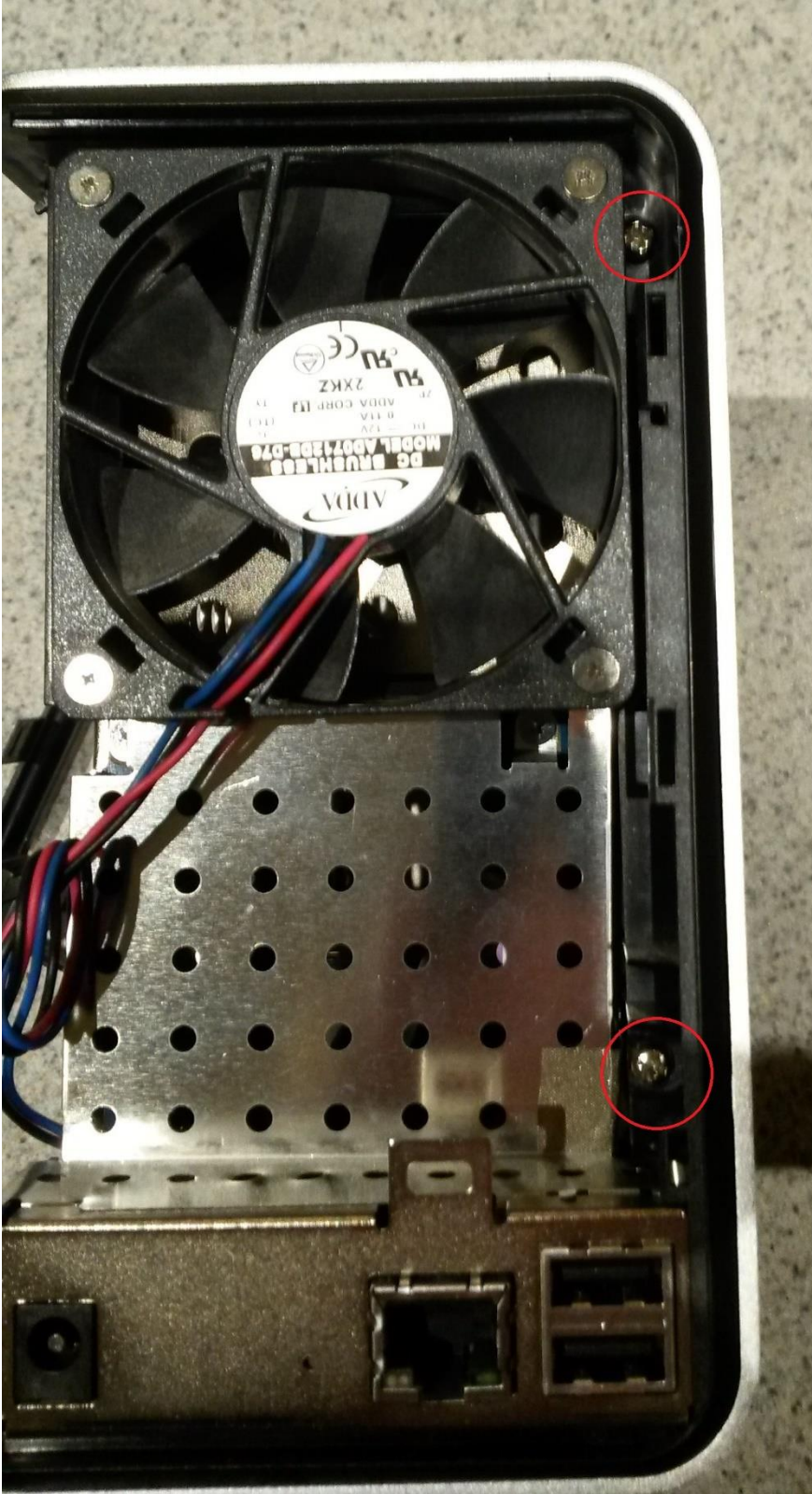


KD20 Case Removal



KD20 Case Removal

6. Remove the 2 long Philips screws from the back of the case:



KD20 Case Removal



7. The black housing will now slide out of the metal case:

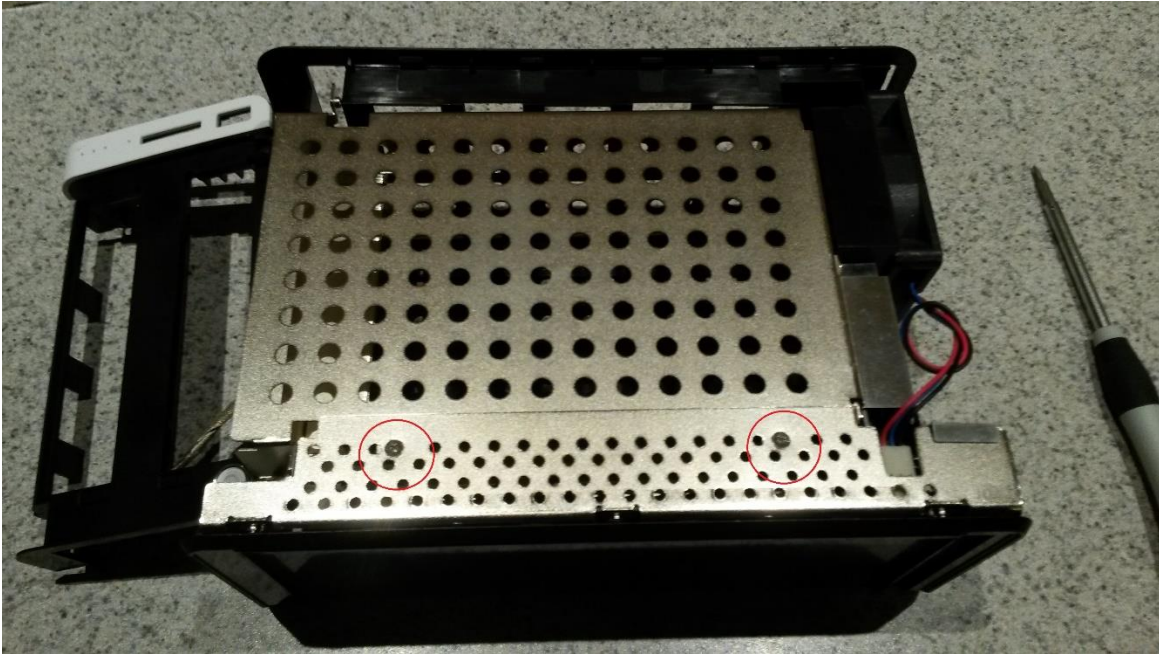


KD20 Case Removal



KD20 Case Removal

8. Remove the 4 short screws holding the inner metal frame together:

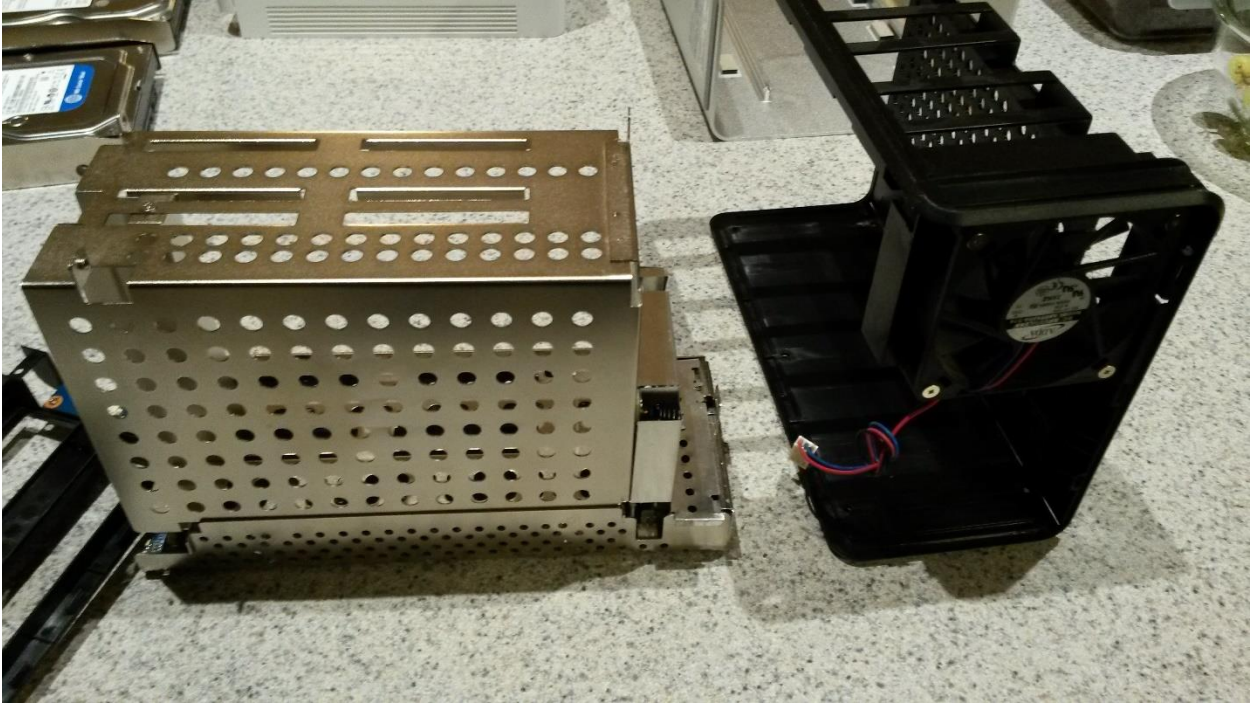


KD20 Case Removal



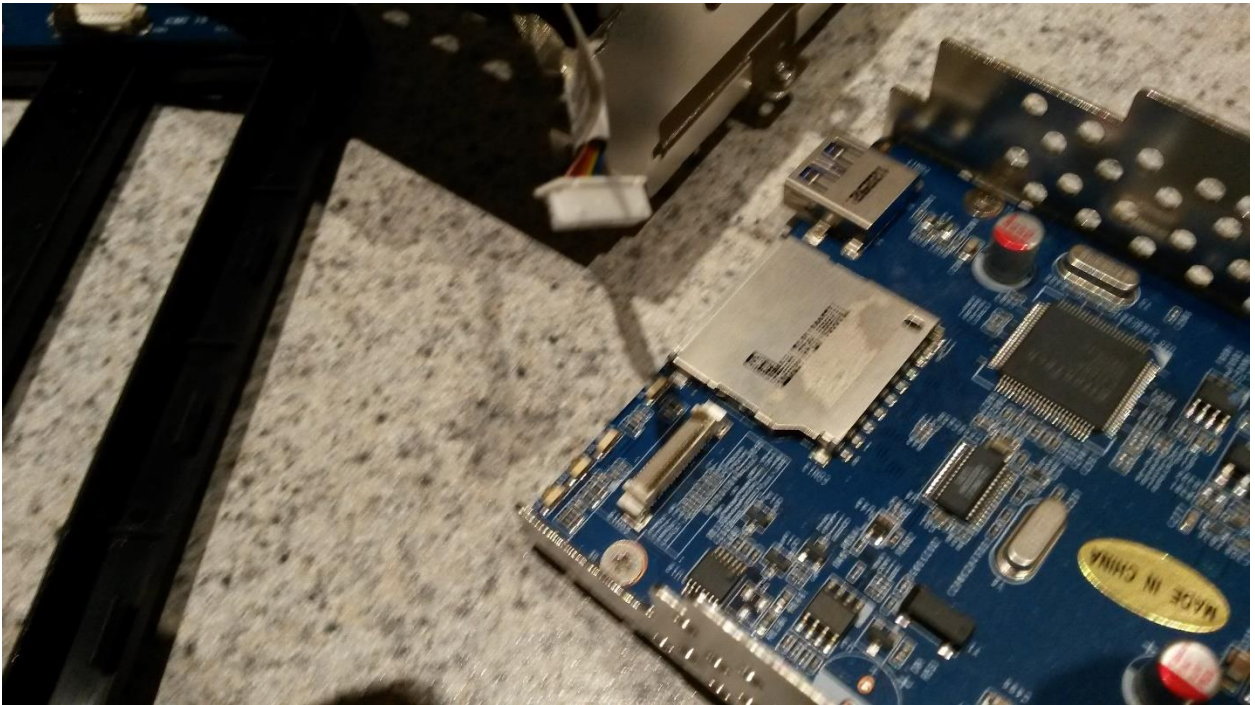
KD20 Case Removal

9. Gently unplug the cooling fan from the main PCB and remove the inner metal housing from the black plastic housing:

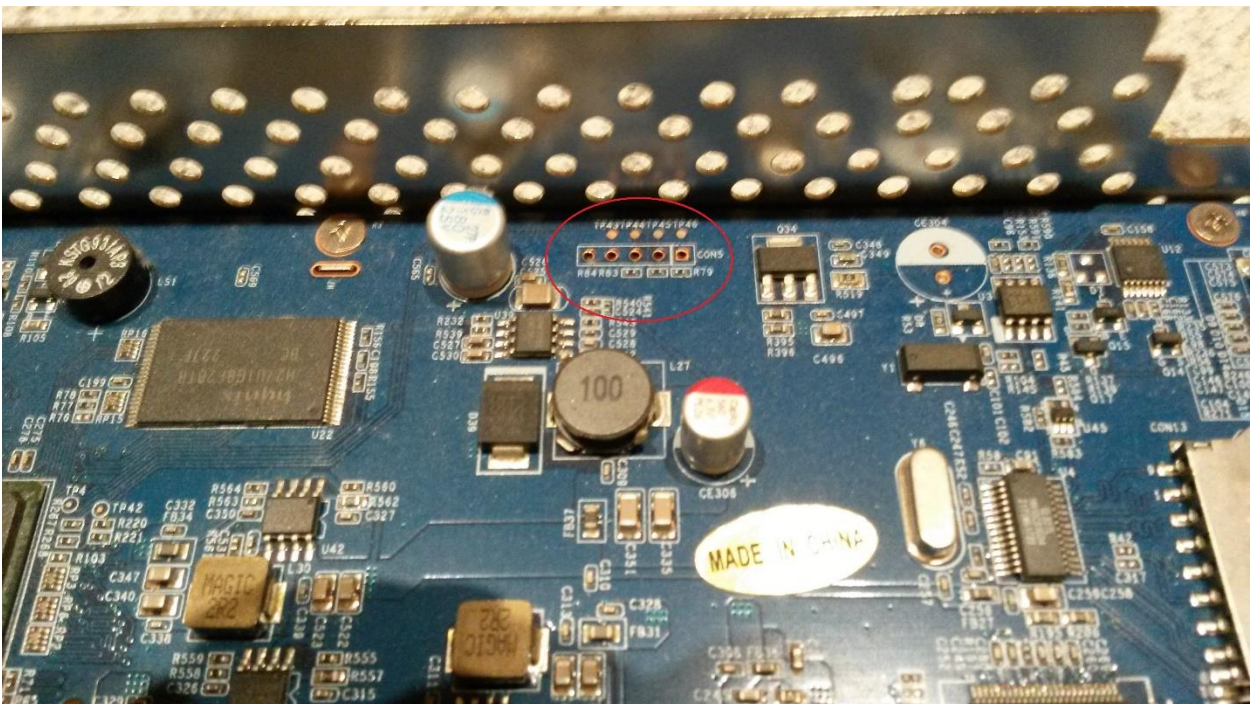


KD20 Case Removal

10. Gently unplug the front switch plate from main PCB:



11. CON5 is the serial terminal port:



() (GND) (RX) (TX) [] CON5

115200 baud, N, 8, 1